

URBAN
SURFACES

SOUND-TEC

20MIL SPC FLOORING

20
MIL

Part of the Complete
Sound-Tec Collection

Sound-Tec

Sound-Tec Plus

Sound-Tec Tile

Take Your
Stairs To The
Next Level.

100% WATERPROOF
NO KIDDING.

Open Fred Harris

Mesa Verde | 9714

Size	9" x 60"
Installation	Floating
Warranty	Lifetime
	100% Waterproof

Open

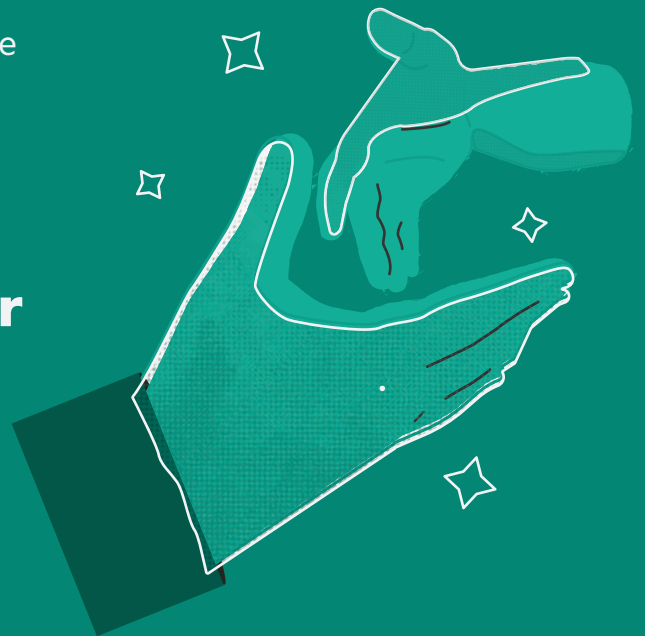
ALLOW US TO INTRODUCE OURSELVES

Urban Surfaces provides the multi-unit and builder markets with beautiful, innovative, and high-quality flooring products. We work with you to select materials, coordinate schedules, and do whatever it takes to deliver your order at just the right time.

With Urban Surfaces, you are not just another customer. We build our business around yours to keep your flooring selection in stock and ready to ship for the duration of your project.

There's a great reason some of the biggest national property management firms trust Urban Surfaces. We value partnership above all else, and we promise to reliably supply you with luxury vinyl flooring for projects of any size.

**The most reliable authority
in LVP and a trusted partner
to builder and multi-unit
spaces across the nation.**



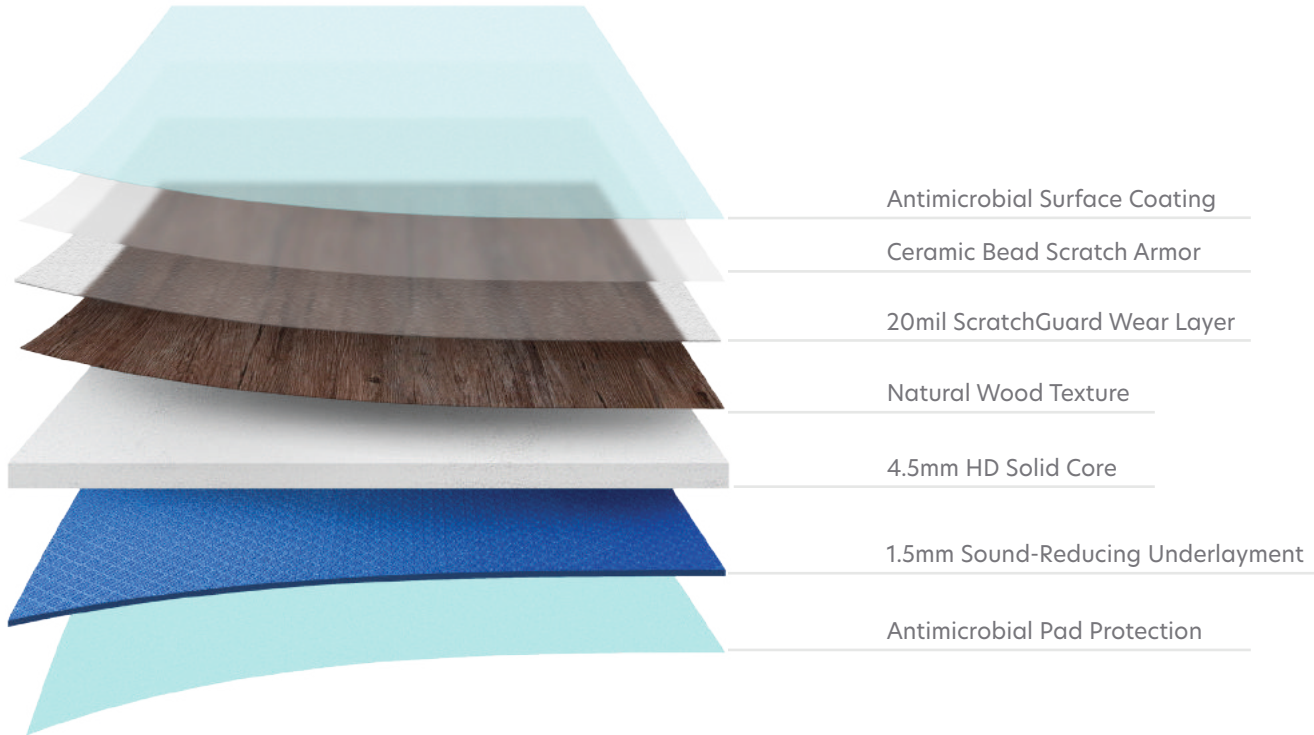
**FOREVER
WATERPROOF
AND SOUND
REDUCING**



SOUND-TEC
PRODUCT LINE

SOUND-TEC

20MIL SPC FLOORING



TAB CUTOUT



Proudly Partnered With
Veneklasen Associates

The First and Still the Best Authority
on Acoustics.



SCAN FOR
MORE INFO



UNPARALLELED NOISE REDUCTION

Forever Waterproof & Sound Reducing

Sound-Tec, the original sound-reducing floor, continues to outpace the competition with its impressive quality. Sound-Tec floors include antimicrobial coatings above and below to protect against harmful mold and mildew.

Product Type	Stone Polymer Composite
Core Material	4.5mm High-Density Solid Core
Wear Layer	20mil ScratchGuard
Embossing	Natural Wood Texture
Edge Profile	Beveled Edge
Overall Thickness	6mm (0.236")
Nominal Plank Size	7" x 48"
Actual Plank Size	182mm x 1220mm
Finish	Antimicrobial & Ceramic Bead
Attached Pad	1.5mm Sound-Reducing & Antimicrobial Pad
Clip System	Angle-Drop Clip System
Bacteria Resistance	Bioshield Coat
Residential Warranty	Lifetime
Light Commercial Warranty	20 Years
Commercial Warranty	15 Years

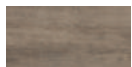
Sound-Tec™ Collection



Sound-Tec™ 7" x 48"

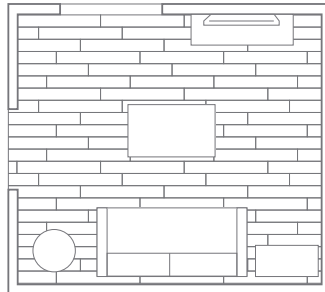


Sound-Tec Plus™ 9" x 60"



Sound-Tec Tile™ 12" x 24"

Sound-Tec™ Overview



20 MIL

ANGLE-DROP CLIP SYSTEM

Installs quickly and easily

Watertight seams block water

ALL-ENCOMPASSING ANTIMICROBIAL PROTECTION

Keeps the surface free of bacteria

Prevents hidden mold below

4.5MM HIGH-DENSITY CORE

Engineered for structural stability

Waterproof Solid Core

Limestone base

CERAMIC-BEAD SCRATCH ARMOR

Advanced protection

Deflects scratches

Reinforced with ceramic bead

1.5MM SOUND-REDUCING UNDERLAYMENT

Dramatically improves noise mitigation

Surpasses HIIC, STC, and IIC standards

Provides extra comfort

Exact-Match
Moldings
for Every
Design



Sixth Avenue
9527





Pembroke
9511





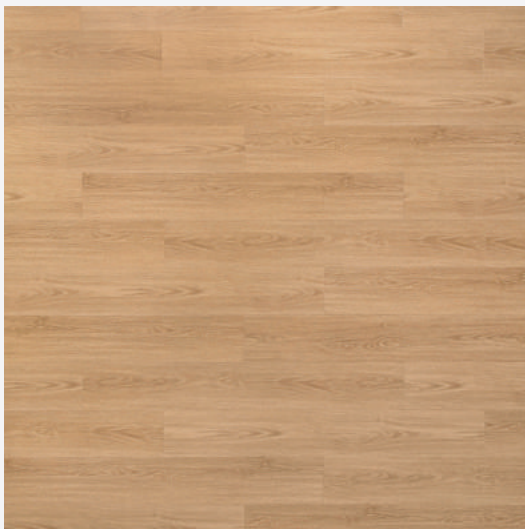
Caspian Heights
9520





Charlton Plaza 9526





Navajo
9563





Astoria
9521





Yosemite
9599





Boardwalk
9503



Dakota Way
9509





Cheyenne
9553





Sedona Bridge
9508





Avondale
9529





Monterey
9510





Kodiak
9537



West Broadway
9524





Cambridge
9523





Midland Grey
9525





Twilight
9505





Stormy Sky
9557





La Jolla
9516





Alamo
9538





Courtland Alley 9528





Midnight Grey
9573





Fairbanks
9534



NATURALLY STUNNING FLOORS FOR THE MODERN HOME

 **SOUND-TEC PLUS**
20MIL SPC FLOORING

TAB CUTOUT

SOUND-TEC PLUS
20MM SPC FLOORING

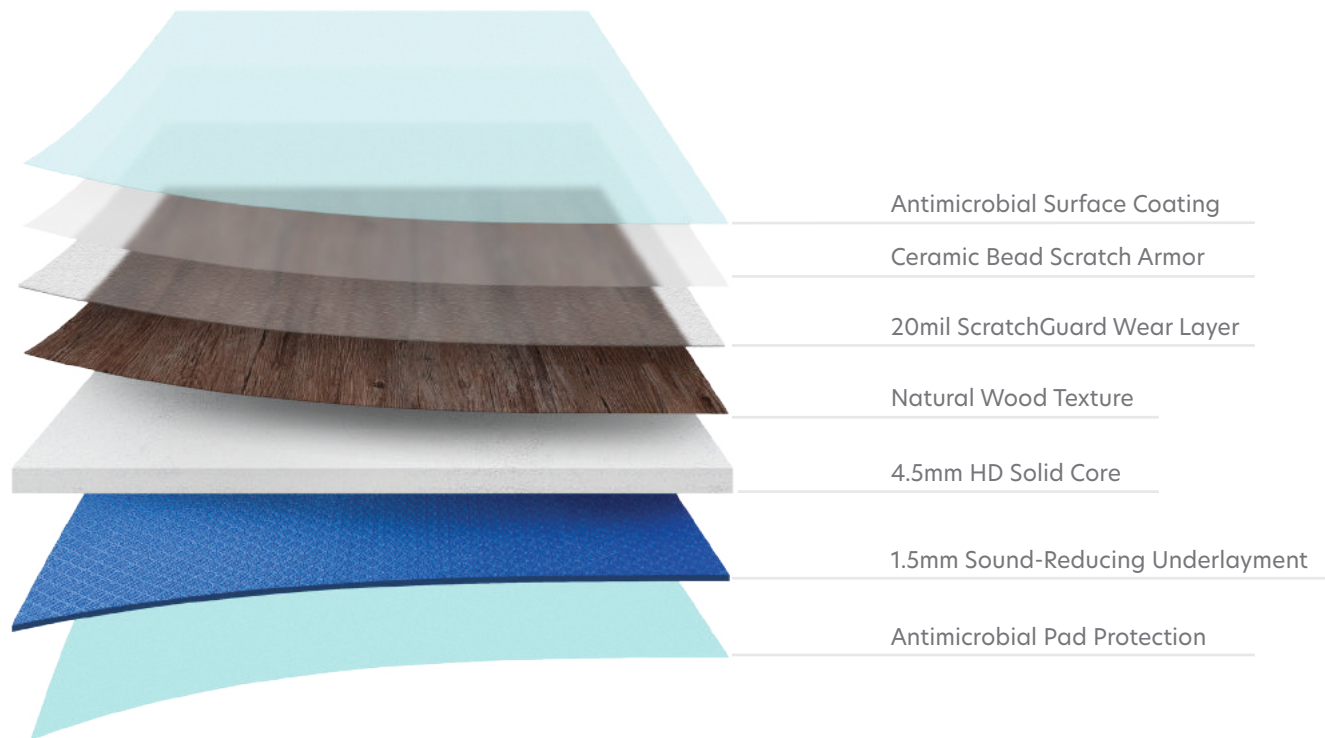
TAB CUTOUT



SOUND-TEC PLUS
PRODUCT LINE

SOUND-TEC PLUS

20MIL SPC FLOORING



Proudly Partnered With
Veneklasen Associates

The First and Still the Best Authority
on Acoustics.



SCAN FOR
MORE INFO



MORE BEAUTY PER PLANK

Naturally Stunning Floors for the Modern Home

The larger format of Sound-Tec Plus has captured a lot of attention with naturally pristine visuals inspired by the world's most breathtaking destinations. Take a moment to enjoy the luxurious options in this expansive product line containing authentic wood styles ranging from rustic to modern.

Product Type	Stone Polymer Composite
Core Material	4.5mm High-Density Solid Core
Wear Layer	20mil ScratchGuard
Embossing	Natural Wood Texture
Edge Profile	Painted Bevel Edge
Overall Thickness	6mm (0.236")
Nominal Plank Size	9" x 60"
Actual Plank Size	230mm x 1524mm
Finish	Antimicrobial & Ceramic Bead
Attached Pad	1.5mm Sound-Reducing & Antimicrobial Pad
Clip System	Angle-Drop Clip System
Bacteria Resistance	Bioshield Coat
Residential Warranty	Lifetime
Light Commercial Warranty	20 Years
Commercial Warranty	15 Years

Sound-Tec™ Collection



Sound-Tec™ 7" x 48"

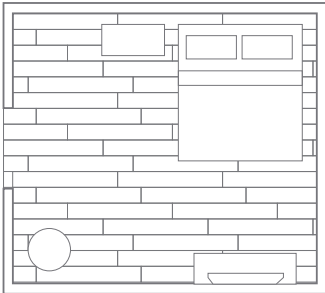


Sound-Tec Plus™ 9" x 60"



Sound-Tec Tile™ 12" x 24"

Sound-Tec Plus™ Overview



REMARKABLE 9" X 60" BEAUTY

Sophisticated and premium style
Ultra-realistic look
Natural grain feel

ALL-ENCOMPASSING ANTIMICROBIAL PROTECTION

Keeps the surface free of bacteria
Prevents hidden mold below

4.5MM HIGH-DENSITY CORE

Engineered for structural stability
Waterproof Solid Core
Limestone base

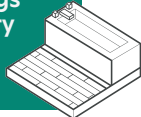
CERAMIC-BEAD SCRATCH ARMOR

Advanced protection
Deflects scratches
Reinforced with ceramic bead

1.5MM SOUND-REDUCING UNDERLAYMENT

Dramatically improves noise mitigation
Surpasses HIIC, STC, and IIC standards
Provides extra comfort

Exact-Match
Moldings
for Every
Design

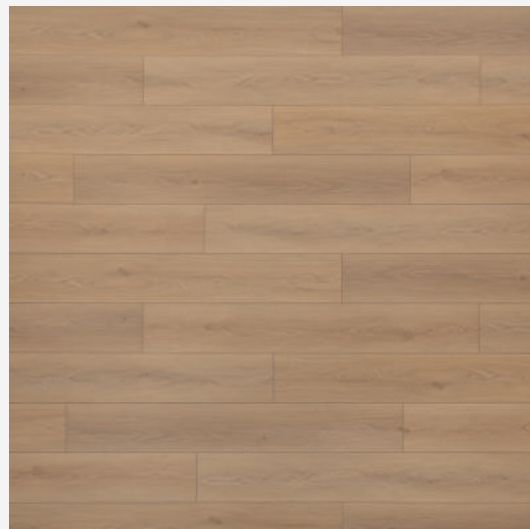


Biscayne Bay
9711





Mesa Verde
9714



Joshua Tree
9713





Mount Rainier
9707



Pinnacle Grove
9715





Mount Olympia 9712





Yellowstone
9706





Acadia
9704



**ELEVATE ANY
SPACE WITH
THE LUXURY
OF STONE**

SOUND-TEC TILE
20MIL SPC FLOORING

TAB CUTOUT

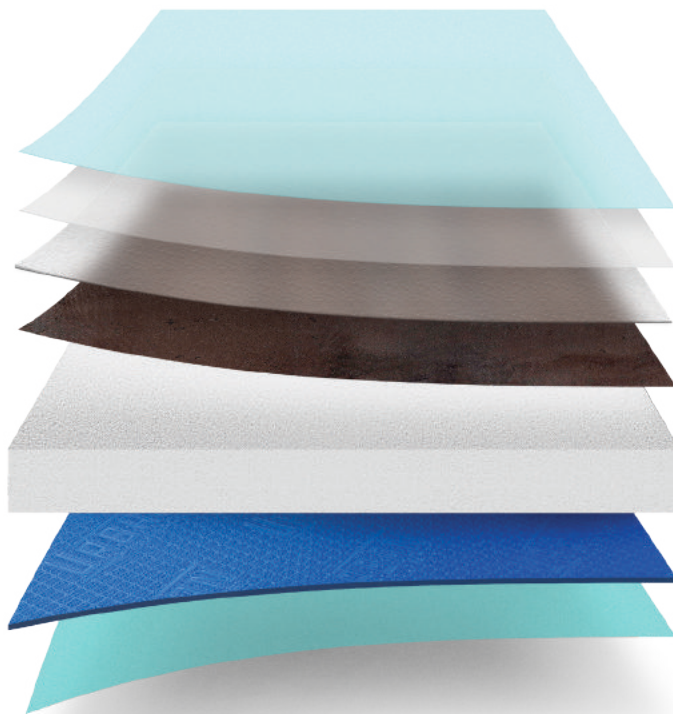
SOUND-TEC TILE
20MIL SPC FLOORING



SOUND-TEC TILE
PRODUCT LINE

SOUND-TEC TILE

20MIL SPC FLOORING



Antimicrobial Surface Coating

Ceramic Bead Scratch Armor

20mil ScratchGuard Wear Layer

Natural Stone Texture

4.5mm HD Solid Core

1.5mm Sound-Reducing Underlayment

Antimicrobial Pad Protection



Proudly Partnered With
Veneklasen Associates

The First and Still the Best Authority
on Acoustics.



SCAN FOR
MORE INFO

TAB CUTOUT

SOUND-TEC TILE
20MIL SPC FLOORING



LUXURIOUS STONE STYLE



Rock Solid, Long Lasting Stone Looks

Sound-Tec Tile takes a “best of both worlds” approach, providing the look of stone at a fraction of the cost. With a full range of colors and patterns to choose from, it’s the perfect choice for kitchens, baths, and fine art galleries.

Product Type	Stone Polymer Composite
Core Material	4.5mm High-Density Solid Core
Wear Layer	20mil ScratchGuard
Embossing	Natural Stone Texture
Edge Profile	Beveled Edge
Overall Thickness	6mm (0.236")
Nominal Plank Size	12" x 24"
Actual Plank Size	305mm x 609mm
Finish	Antimicrobial & Ceramic Bead
Attached Pad	1.5mm Sound-Reducing & Antimicrobial Pad
Clip System	Angle-Drop Clip System
Bacteria Resistance	Bioshield Coat
Residential Warranty	Lifetime
Light Commercial Warranty	20 Years
Commercial Warranty	15 Years

Sound-Tec™ Collection



Sound-Tec™ 7" x 48"

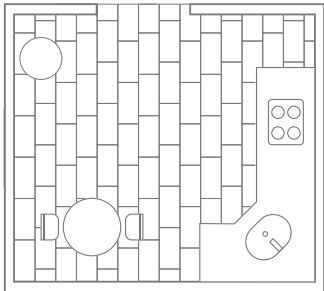


Sound-Tec Plus™ 9" x 60"



Sound-Tec Tile™ 12" x 24"

Sound-Tec Tile™ Overview



STONE TILE AESTHETIC

Perfect for kitchens and baths

Ultra-realistic look and tactile stone feel

ALL-ENCOMPASSING ANTIMICROBIAL PROTECTION

Keeps the surface free of bacteria

Prevents hidden mold below

4.5MM HIGH-DENSITY CORE

Engineered for structural stability

Waterproof Solid Core

Limestone base

CERAMIC-BEAD SCRATCH ARMOR

Advanced protection

Deflects scratches

Reinforced with ceramic bead

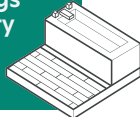
1.5MM SOUND-REDUCING UNDERLAYMENT

Dramatically improves noise mitigation

Surpasses HIIC, STC, and IIC standards

Provides extra comfort

Exact-Match
Moldings
for Every
Design



Electra
9609





Vega
9610



Astella
9608





Solstice
9606



Nova
9607





Luna
9605





Meteor
9604





Obsidian 9603





CUT DOWN INSTALLATION TIME BY 30%

Installing Sound-Tec is faster and easier than ever before, thanks to its innovative Angle-Drop clip system. Angle-Drop ensures a reliable, water-tight lock that lasts. Designed to be installed with just a click, renovating just became a whole lot easier.

ANGLE-DROP CLIP SYSTEM



FULL GUIDE
TO INSTALL
ANGLE-DROP
CLIP SYSTEM



**INSTALLATION
PERFECTION
EVERY TIME**



TAB CUTOUT





EXACT-MATCH STAIR SOLUTIONS

Our all-in-one stair treads are easily trimmed to fit each step and are 100% waterproof with strong dent and scratch resistance. These stair treads also feature contemporary square-edge nosing and mitered returns for exposed edges.



####-SQTR

SQUARE EDGE STAIR TREAD

Material WPC
Dimensions 11 3/4" Wide x 1 5/8" Tall
Length 51" 5/8" Long
Available for Sound-Tec & Sound-Tec Plus



####-VSN

VERSATILE STAIR NOSE

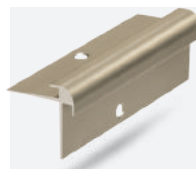
Material SPC
Dimensions 4 1/2" Wide x 1 7/8" Tall
Length 94" Long
Available for Sound-Tec & Sound-Tec Plus



####-SN

STAIR NOSE

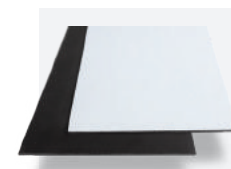
Material SPC
Dimensions 2" Wide x 1" Tall
Length 94" Long
Available for Sound-Tec & Sound-Tec Plus



####-MSN

METAL STAIR NOSE

Material Aluminum
Dimensions 5/16" Wide
Length 96" Long



WATERPROOF SPC RISER

Material SPC
Dimensions 7-1/4" Wide
Length 48" Long



EXACT-MATCH MOLDINGS

Our moldings provide clean and beautiful transitions with exact matches for every one of our Floating Floor designs. These highly wear-resistant and 100% waterproof moldings are robustly built to blend.



####-EC

END CAP

Material	SPC
Dimensions	1-3/8" Wide x 3/8" Tall
Length	94" Long



####-SLT

SLT MOLDING

Material	SPC
Dimensions	2" Wide x 1/4" Tall
Length	94" Long



####-RDCR

REDUCER

Material	SPC
Dimensions	1-3/4" Wide x 3/8" Tall
Length	94" Long



####-TM

T-MOLDING

Material	SPC
Dimensions	1-1/2" Wide x 5/16" Tall
Length	94" Long

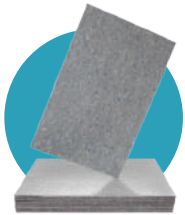


####-LPEC

LOW PROFILE END CAP

Material	SPC
Dimensions	1" Wide x 3/8" Tall
Length	94" Long





Boost

FloorSilencer Boost™ - 4' x 6' Panel, 6mm (1/4") Thickness

Provides the benefits of sound reduction, thermal insulation, antimicrobial moisture protection, subfloor-imperfection smoothing, and cushioning that reduces foot and leg fatigue without compromising floor-clip integrity. Innovative fiberboards, made from quality, eco-friendly recycled materials. Dense and durable while still being cuttable to shape.



78
HIIC

73
LIIC

66
IIC

24
ΔIIC

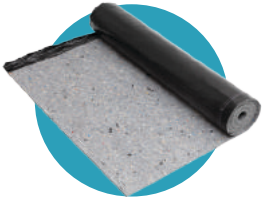
41
ΔHIIC

61
STC

*Scores Reflect Combined Results of FloorSilencer Boost with Sound-Tec Floating Floor.

Compatibility

Floating Floor ✓ 4mm+



Flex

FloorSilencer Flex™ - 6' x 60' Roll, 1.4mm Thickness

The ground-breaking design and technology of these rolls provide unparalleled underlayment efficiency with the benefits of sound reduction, thermal insulation, antimicrobial moisture protection, and cushioning that reduces foot and leg fatigue without compromising floor-clip integrity. The thin but effective construction makes Flex™ a quick, easy, and affordable solution.



77
HIIC

71
LIIC

66
IIC

25
ΔIIC

35
ΔHIIC

60
STC

*Scores Reflect Combined Results of FloorSilencer Flex with Sound-Tec Floating Floor.

Compatibility

Floating Floor ✓ 4mm+



Pro

FloorSilencer Pro™ - 3' x 33.4' Roll, 1.25mm Thickness

These underlayment rolls are remarkably easy and versatile, featuring compatibility with every single one of our flooring types. FloorSilencer Pro™ adeptly provides noise reduction, moisture protection, antimicrobial defense, and thermal insulation. It is the ideal underlayment for projects that use very thin flooring or a variety of flooring types.



22
ΔIIC

68
IIC

62
STC



52
IIC

50
STC

*Scores Reflect Combined Results of Floor Silencer Pro with Sound-Tec Floating Floor.

*Scores Reflect Combined Results of Floor-Silencer Pro with 2mm GlueDown Floor.

Compatibility

Floating Floor ✓ 4mm+

GlueDown ✓ 1.6mm+



INSTALLATION PERFECTION EVERY TIME WITH URBAN ESSENTIALS



TRACTION 3545 | SUBFLOOR GRIP COATING

Fast and easy LooseLay installation. Not an adhesive. Provides horizontal grip, priming, and up to 90% moisture protection. Easily replace planks by hand if repairs needed.

Coverage:
1 Coat: 350 sqft per gallon
2 Coats: 200 sqft per gallon



INFUSE 3515 | ENCAPSULATOR & PRIMER

Encapsulates adhesive residue, including cutback, and primes for an effective bond to subfloor. Protects against alkali attack. Apply after any needed moisture protection.

Coverage:
250 sqft per gallon



TRILOGY 3525 | MULTIPURPOSE PRIMER

Primes for an effective adhesive bond and protects against alkali attack. Provides encapsulation or up to 95% moisture protection (not simultaneously).

Coverage:
1 Coat: 350 sqft per gallon
2 Coats: 200 sqft per gallon



INFINITI 3535 | MOISTURE PROTECTION

Provides 100% moisture protection, no testing required. Before applying adhesive, use Infuse™ Encapsulator & primer.

Coverage:
90-120 sqft per gallon



STRONGHOLD 3070 | MOLDING & STAIR TREAD ADHESIVE

Ensures that moldings stay put. High-strength, flexibly bonded, and resistant to high alkalinity. Comes in tube for use with a caulking gun.



SCAN FOR ALL
URBAN ESSENTIALS
PRODUCTS



THE FIRST AND STILL THE BEST AUTHORITY ON ACOUSTICS

Veneklasen Associates, Keeping Noise Under Control

Having earned degrees in physics and mathematics from UCLA, Paul S. Veneklasen founded Veneklasen Associates in 1947 to put his acoustical physics knowledge to work. Veneklasen became an important consultant to government agencies such as the US Air Force, contributing to improved helmet designs and jet-noise suppression. He also contributed to the private sector, providing innovative solutions for acoustic testing that are still in use today.

Veneklasen Associates was the world's first acoustical consulting firm ever founded. Since the beginning, they have treated sound as what it is: a science to be studied inside and out. Understanding the physics of audio has been crucial to them from the start, leading to vital advancements in the measurement, control, and use of sound worldwide.

Badge of Honor

We proudly feature the Veneklasen Associates badge on our packaging. Regardless of which of our floorings you choose, when you see the Veneklasen Associates badge, you can rest assured that you're getting an accurate sound rating.

You don't have to be an acoustical physicist to know how important a quiet environment can be for both work and home. We did the hard part so you can order confidently, knowing you're getting not just a great flooring but a quiet one.



Sound Testing
Wood Assembly

Sound Testing 6" Concrete

Sound Testing 6" Concrete
with Insulation & drywall

Sound Testing 8" Concrete

Impact Sounds

High Frequency HIIC	Low Frequency LIIC	Standard IIC	Standard Delta Δ IIC	High Freq Delta Δ HIIC
63	43	52	-	-
59	70	57	24	28
69	69	64	-	-
61	75	58	-	-

Ambient Sounds

STC

60

51

61

55



+



Sound Testing
Wood Assembly

Sound Testing 6" Concrete

Sound Testing 6" Concrete
with Insulation & drywall

Sound Testing 8" Concrete

Impact Sounds

High Frequency HIIC	Low Frequency LIIC	Standard IIC	Standard Delta Δ IIC	High Freq Delta Δ HIIC
71	44	52	-	-
66	70	58	25	35
77	71	66	-	-
68	77	59	-	-

Ambient Sounds

STC

59

51

60

55



+



Sound Testing
Wood Assembly

Sound Testing 6" Concrete

Sound Testing 6" Concrete
with Insulation & drywall

Sound Testing 8" Concrete

Impact Sounds

High Frequency HIIC	Low Frequency LIIC	Standard IIC	Standard Delta Δ IIC	High Freq Delta Δ HIIC
73	46	55	-	-
72	70	54	24	41
78	73	66	-	-
71	75	57	-	-

Ambient Sounds

STC

60

53

61

56



WHY HARD SURFACE FLOORING?

Hard-surface floors are easy to clean and maintain because they provide a one-dimensional surface that doesn't absorb odors, spills, dust, or soil. They also don't retain moisture, which can lead to the growth of microorganisms, such as dust mites and mold.

What Are You Breathing?

Research by the RFCI shows that, on average, a person will spend 90% of their life indoors. Whether it be in your working environment, your home, or sitting in a movie theater, you will spend a majority of your time inside. When this is realized, you may want to know how healthy the air quality is, and rightly so. A recent study done by the Environmental Protection Agency (EPA) found that indoor air was deemed two to five times more harmful than outdoor air. This is due to many harmful pollutants that may be found indoors, including radon, mold, and carbon dioxide.

Healthy air contributes to better learning in schools, improved productivity in offices, and more comfortable homes. Poor indoor air quality (IAQ) can be a factor in a variety of health problems, such as headaches, dizziness, and more serious long-term effects.



WHY FLOORSCORE?



When it comes to indoor air quality, a primary concern is the emission level of specific volatile organic compounds (VOCs).

Hundreds of resilient flooring materials and their adhesives bear the FloorScore® seal. This seal tells you that the products have been independently certified by SCS to comply with the volatile organic compound emissions criteria of the California Section 01350 standard. Any product that has met these stringent standards is a product that will contribute to good IAQ.

FloorScore Requirements

To earn the FloorScore® seal, a flooring product must satisfy the requirements of the SCS-EC-10.2-2007 Environmental Certification Program – Indoor Air Quality Performance.

Which Includes:

Testing demonstrating compliance with emission concentrations for listed VOCs under California Section 01350

- Manufacturing facility on-site audits and yearly surveillance audits
- Annual product re-testing
- Product record keeping
- A documented quality control plan





SETTING THE TONE FOR THE STEPS AHEAD

URBAN SURFACES

800.492.8722

Sales@UrbanSurfaces.com

Designed and Developed in the U.S.A.