



INSTAGRIP 28 TILE

28MIL LOOSELAY FLOORING

28
MIL

Part of the Complete
InstaGrip Collection

InstaGrip 20

InstaGrip 28

InstaGrip 28 Tile



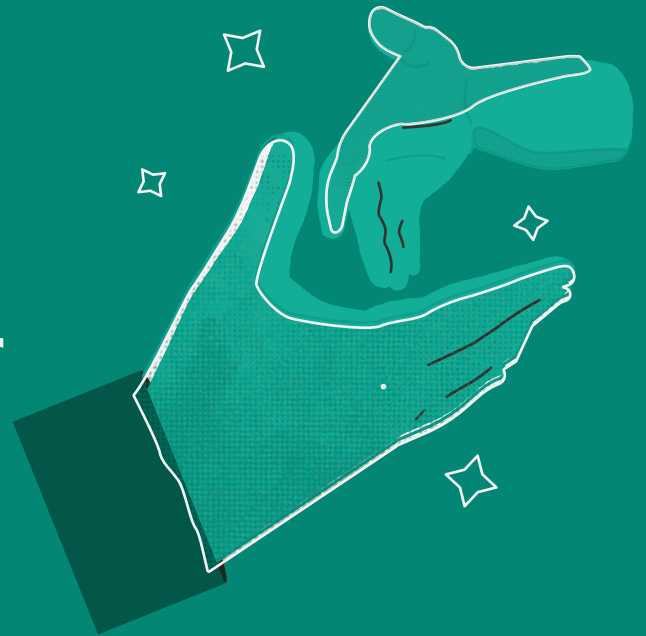
ALLOW US TO INTRODUCE OURSELVES

Urban Surfaces provides the multi-unit and builder markets with beautiful, innovative, and high-quality flooring products. We work with you to select materials, coordinate schedules, and do whatever it takes to deliver your order at just the right time.

With Urban Surfaces, you are not just another customer. We build our business around yours to keep your flooring selection in stock and ready to ship for the duration of your project.

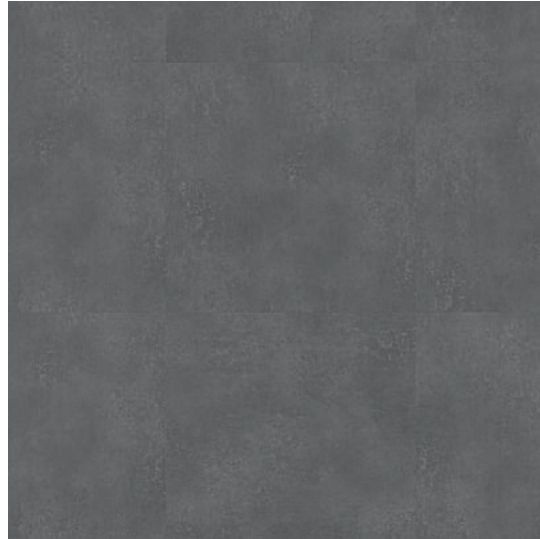
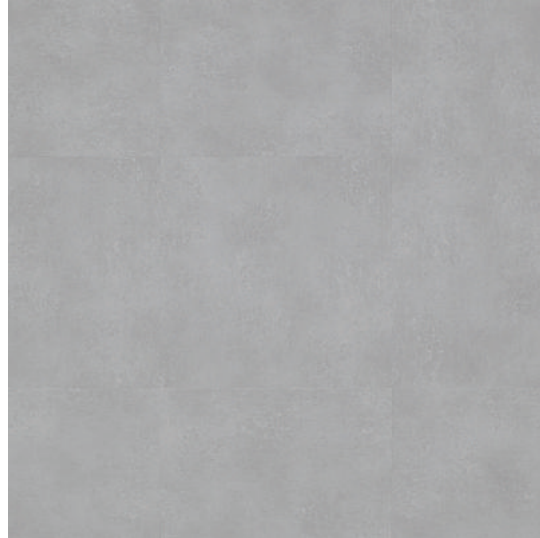
There's a great reason some of the biggest national property management firms trust Urban Surfaces. We value partnership above all else, and we promise to reliably supply you with luxury vinyl flooring for projects of any size.

**The most reliable authority
in LVP and a trusted partner
to builder and multi-unit
spaces across the nation.**



**INDUSTRIAL
BEAUTY
IN GRAND
PROPORTIONS**

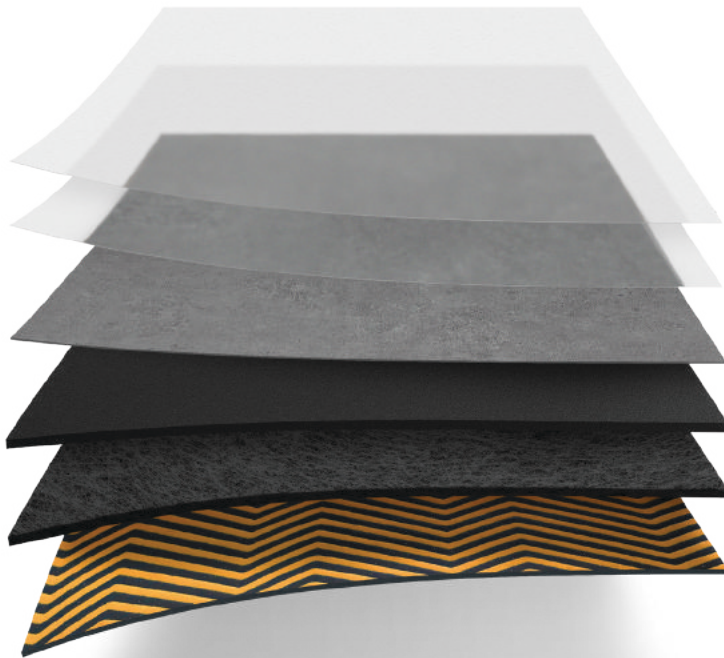
INSTAGRIP28TILE
28MIL LOOSELAY FLOORING



INSTAGRIP 28 TILE
PRODUCT LINE

INSTAGRIP 28TILE

28MIL LOOSELAY FLOORING



Enhanced Polyurethane System

28mil ScratchGuard Wear Layer

Natural Stone Texture

5mm Pure Vinyl

FiberMax Stabilization Layer

Grip-Tec Backing



Proudly Partnered With
Veneklasen Associates

The First and Still the Best Authority
on Acoustics.



SCAN FOR
MORE INFO



CONTEMPORARY STONE STYLE

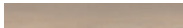


Simply Unforgettable

InstaGrip 28 Tile is LooseLay vinyl flooring with an industrial and premium 36" x 36" aesthetic. This FiberMax-reinforced, Grip-Tec-backed tile features highly durable, 5mm vinyl construction with a concrete appearance, smooth topography, and large dimensions.

| | |
|---------------------------|------------------------------|
| Product Type | Luxury Vinyl Plank (LVP) |
| Core Material | 5mm Virgin Vinyl |
| Fiberglass Reinforced | FiberMax |
| Wear Layer | 28mil ScratchGuard |
| Embossing | Natural Stone Texture |
| Edge Profile | Beveled Edge |
| Overall Thickness | 5mm (0.196") |
| Nominal Plank Size | 36" x 36" |
| Actual Plank Size | 914.4mm x 914.4mm |
| Finish | Enhanced Polyurethane System |
| Installation Type | Traction / Adhesive |
| Bacteria Resistance | Standard |
| Residential Warranty | Lifetime |
| Light Commercial Warranty | Lifetime |
| Commercial Warranty | 20 Years |

InstaGrip™ Collection



InstaGrip 20™ 9" x 60"

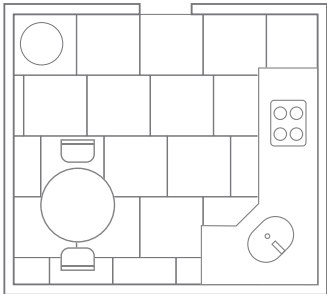


InstaGrip 28™ 9" x 48"



InstaGrip 28 Tile™ 36" x 36"

InstaGrip 28 Tile™ Overview



STONE TILE AESTHETIC

Sophisticated industrial look

Ultra-realistic style

Tactile stone feel

LARGE 36" X 36" TILE FORMAT

Impressive flooring dimensions for premium elegance

5MM HIGH-DENSITY CORE

Extra thick and durable

Chip and dent resistant

100% waterproof

28MIL SCRATCHGUARD WEAR LAYER

Superior wear protection deflects damage

FIBERMAX STABILIZATION LAYER

Increased dimensional stability

Extra tolerance for high and low temperatures

Exact-Match
Moldings
for Every
Design



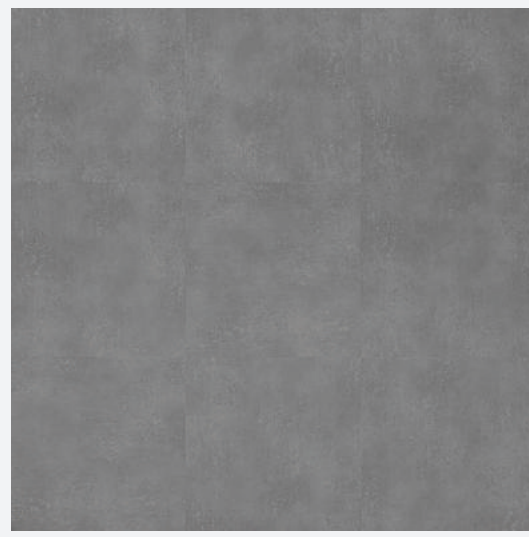
Stratus
1030





Cloudburst

1031

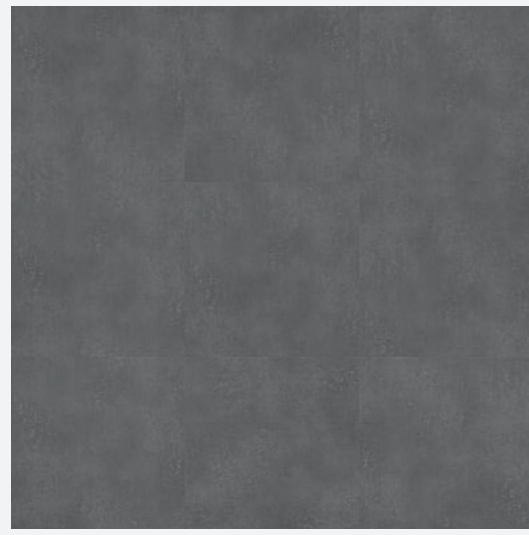


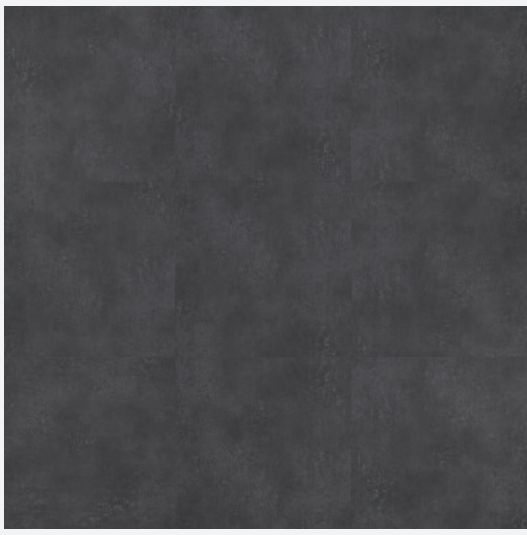
Aurora
1032





Landfall 1033





Thunderhead
1034





Eclipse 1035





INSTALLATION PERFECTION EVERY TIME WITH URBAN ESSENTIALS

ADHESIVE PRODUCTS



PRISM

3010 | FIRM SET ADHESIVE

Bonds subfloor to GlueDown LVP for light-traffic conditions. Make sure to use the proper trowel based on porosity and primer usage.

Coverage:
150-260 sqft per gallon



EVERLAST

3020 | HARD-SET ADHESIVE

Bonds subfloor to GlueDown LVP for light-traffic and commercial applications. Make sure to use the proper trowel based on porosity and primer usage.

Coverage:
150-260 sqft per gallon



OMNI

3050 | ADHESIVE & MOISTURE BARRIER

Does it all in one step. Commercial-grade adhesive for GlueDown LVP, primer, and unlimited moisture protection. No moisture testing required.

Coverage:
180-250 sqft per gallon



ASCEND

3080 | WALL ADHESIVE

Adhesive for application of LVP to vertical surfaces. Create a beautifully unique look for walls by using 2mm or thinner flooring.

Coverage:
250-300 sqft per gallon



STRONGHOLD

3070 | MOLDING & STAIR TREAD ADHESIVE

Ensures that moldings stay put. High-strength, flexibly bonded, and resistant to high alkalinity. Comes in tube for use with a caulking gun.



SCAN FOR ALL
URBAN ESSENTIALS
PRODUCTS

SUBFLOOR-COATING PRODUCTS



TRACTION 3545 | SUBFLOOR GRIP COATING

Fast and easy LooseLay installation. Not an adhesive. Provides horizontal grip, priming, and up to 90% moisture protection. Easily replace planks by hand if repairs are ever needed.

Coverage:
1 Coat: 350 sqft per gallon
2 Coats: 200 sqft per gallon

TRILOGY 3525 | MULTIPURPOSE PRIMER

Primes for an effective adhesive bond and protects against alkali attack. Provides encapsulation or up to 95% moisture protection (not simultaneously).

Coverage:
1 Coat: 350 sqft per gallon
2 Coats: 200 sqft per gallon



INFUSE 3515 | ENCAPSULATOR & PRIMER

Encapsulates adhesive residue, including cutback, and primes for an effective bond to subfloor. Protects against alkali attack. Apply after any needed moisture protection.

Coverage:
250 sqft per gallon



ADVANTAGE 3505 | SUBFLOOR PRIMER

Primes for an effective adhesive bond to subfloor. Protects against alkali attack. Apply after appropriate moisture protection.

Coverage:
300-450 sqft per gallon

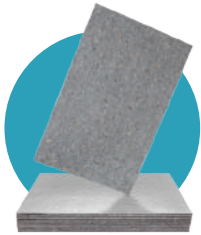


INFINITI 3535 | MOISTURE PROTECTION

Provides 100% moisture protection, no testing required. Before applying adhesive, use Infuse™ Encapsulator & primer.

Coverage:
90-120 sqft per gallon





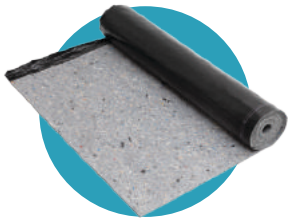
Boost

FloorSilencer Boost™ - 4' x 6' Panel, 6mm (1/4") Thickness

Provides the benefits of sound reduction, thermal insulation, antimicrobial moisture protection, subfloor-imperfection smoothing, and cushioning that reduces foot and leg fatigue without compromising floor-clip integrity. Innovative fiberboards, made from quality, eco-friendly recycled materials. Dense and durable while still being cuttable to shape.

Compatibility

Floating Floor ✓ 4mm+



Flex

FloorSilencer Flex™ - 6' x 60' Roll, 1.4mm Thickness

The ground-breaking design and technology of these rolls provide unparalleled underlayment efficiency with the benefits of sound reduction, thermal insulation, antimicrobial moisture protection, and cushioning that reduces foot and leg fatigue without compromising floor-clip integrity. The thin but effective construction makes Flex™ a quick, easy, and affordable solution.

Compatibility

Floating Floor ✓ 4mm+



Pro

FloorSilencer Pro™ - 3' x 33.4' Roll, 1.25mm Thickness

These underlayment rolls are remarkably easy and versatile, featuring compatibility with every single one of our flooring types. FloorSilencer Pro™ adeptly provides noise reduction, moisture protection, antimicrobial defense, and thermal insulation. It is the ideal underlayment for projects that use very thin flooring or a variety of flooring types.

Compatibility

Floating Floor ✓ 4mm+

GlueDown ✓ 1.6mm+



THE FIRST AND STILL THE BEST AUTHORITY ON ACOUSTICS

Veneklasen Associates, Keeping Noise Under Control

Having earned degrees in physics and mathematics from UCLA, Paul S. Veneklasen founded Veneklasen Associates in 1947 to put his acoustical physics knowledge to work. Veneklasen became an important consultant to government agencies such as the US Air Force, contributing to improved helmet designs and jet-noise suppression. He also contributed to the private sector, providing innovative solutions for acoustic testing that are still in use today.

Veneklasen Associates was the world’s first acoustical consulting firm ever founded. Since the beginning, they have treated sound as what it is: a science to be studied inside and out. Understanding the physics of audio has been crucial to them from the start, leading to vital advancements in the measurement, control, and use of sound worldwide.

Badge of Honor

We proudly feature the Veneklasen Associates badge on our packaging. Regardless of which of our floorings you choose, when you see the Veneklasen Associates badge, you can rest assured that you’re getting an accurate sound rating.

You don’t have to be an acoustical physicist to know how important a quiet environment can be for both work and home. We did the hard part so you can order confidently, knowing you’re getting not just a great flooring but a quiet one.



| Impact Sounds | | Ambient Sounds |
|---------------|---------------------|----------------|
| Standard IIC | Standard Delta ΔIIC | STC |
| 48 | 11 | 61 |





WHY HARD SURFACE FLOORING?

Hard-surface floors are easy to clean and maintain because they provide a one-dimensional surface that doesn't absorb odors, spills, dust, or soil. They also don't retain moisture, which can lead to the growth of microorganisms, such as dust mites and mold.

What Are You Breathing?

Research by the RFCI shows that, on average, a person will spend 90% of their life indoors. Whether it be in your working environment, your home, or sitting in a movie theater, you will spend a majority of your time inside. When this is realized, you may want to know how healthy the air quality is, and rightly so. A recent study done by the Environmental Protection Agency (EPA) found that indoor air was deemed two to five times more harmful than outdoor air. This is due to many harmful pollutants that may be found indoors, including radon, mold, and carbon dioxide.

Healthy air contributes to better learning in schools, improved productivity in offices, and more comfortable homes. Poor indoor air quality (IAQ) can be a factor in a variety of health problems, such as headaches, dizziness, and more serious long-term effects.



WHY FLOORSCORE?



When it comes to indoor air quality, a primary concern is the emission level of specific volatile organic compounds (VOCs).

Hundreds of resilient flooring materials and their adhesives bear the FloorScore® seal. This seal tells you that the products have been independently certified by SCS to comply with the volatile organic compound emissions criteria of the California Section 01350 standard. Any product that has met these stringent standards is a product that will contribute to good IAQ.

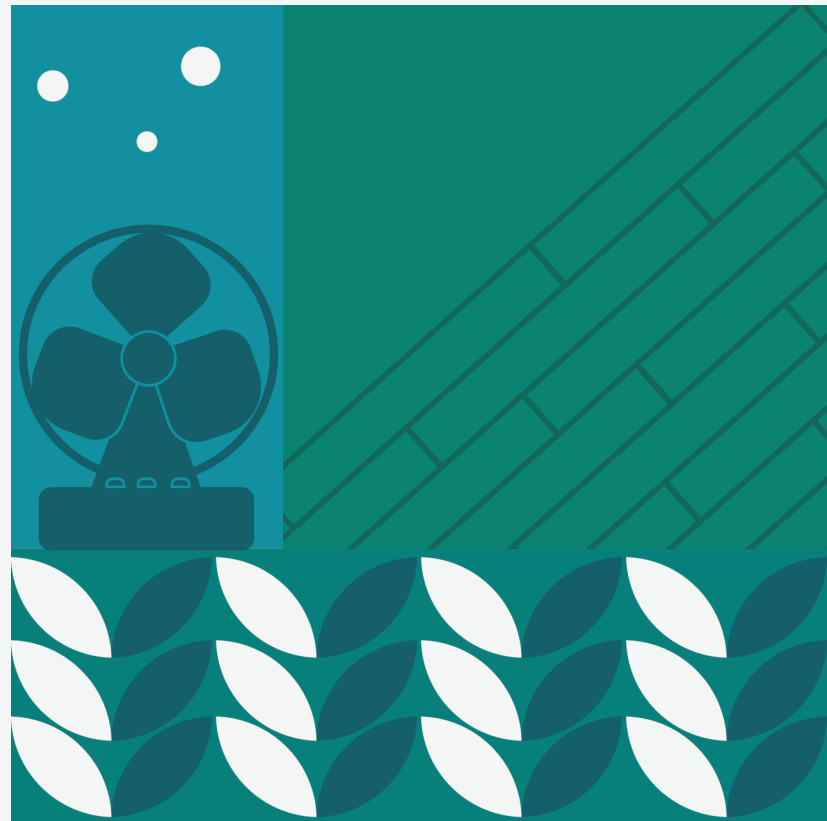
FloorScore Requirements

To earn the FloorScore® seal, a flooring product must satisfy the requirements of the SCS-EC-10.2-2007 Environmental Certification Program – Indoor Air Quality Performance.

Which Includes:

Testing demonstrating compliance with emission concentrations for listed VOCs under California Section 01350

- Manufacturing facility on-site audits and yearly surveillance audits
- Annual product re-testing
- Product record keeping
- A documented quality control plan





ABSOLUTELY UNRIVALED PERFORMANCE

URBAN SURFACES

800.492.8722

Sales@UrbanSurfaces.com

Designed and Developed in the U.S.A.